

SWH COPPER-TIN PLATED GROUNDING LUG

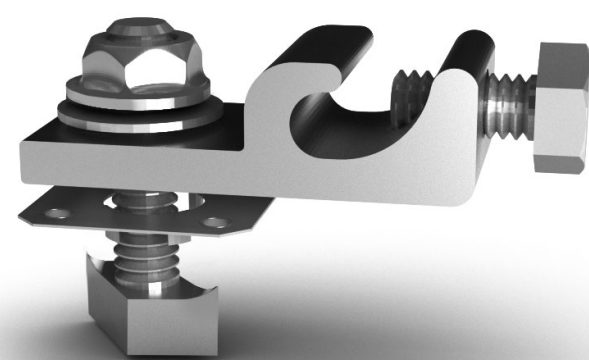
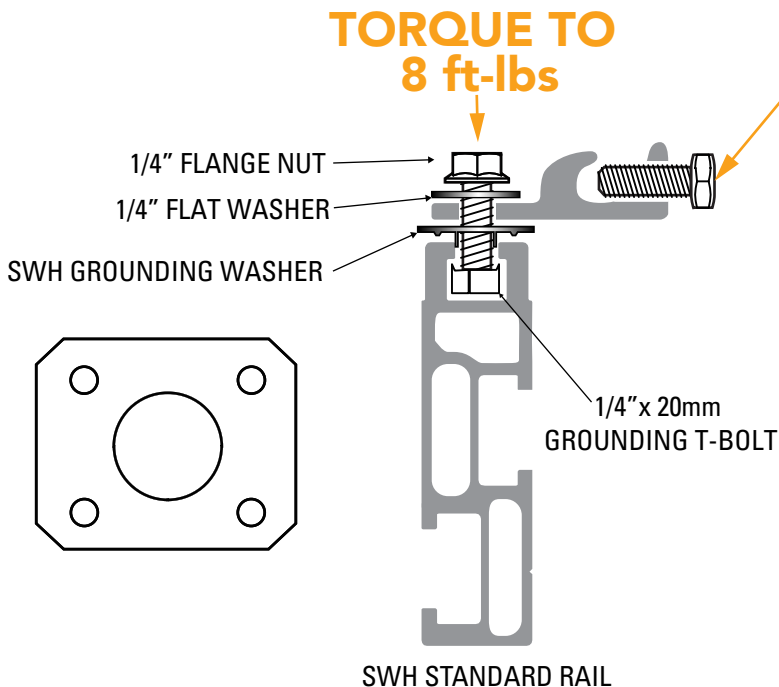
Part No. EA-SW-GL-02CT

RECOGNIZED COMPONENT

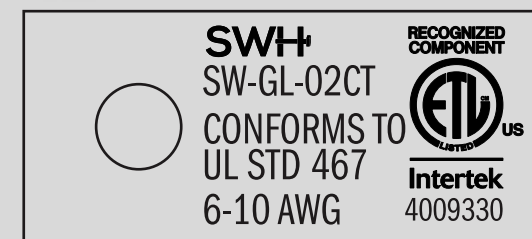


CONFORMS TO
UL STD 467

Intertek
4009330



TOP VIEW



*Method of Marking:
Laser marking or machine stamped

*NOT TO SCALE

All wire sizes, unless noted otherwise are American Wire Gauge (AWG)

Slide or drop SW-GL-02CT grounding lug into top mounting slot of rail. Torque lug in place to 8 ft-lbs. Torque wire terminal screw to 2 ft-lbs. Nibs will penetrate rail anodization and create grounding path through rail.



SWH grounding clip and washer are intended for SINGLE USE ONLY. Functionality may be compromised if reused.